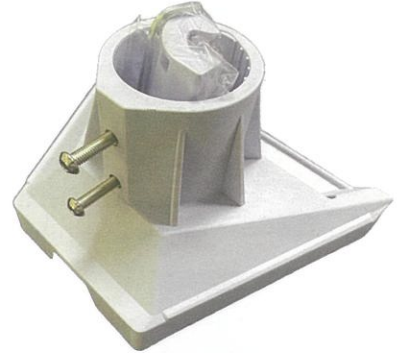
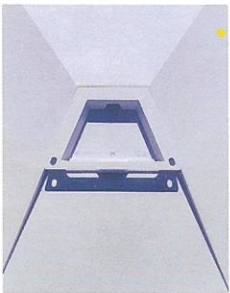


FB607313 Starlink Pole Adaptor suit GEN 3 version 4 Starlink Dish.

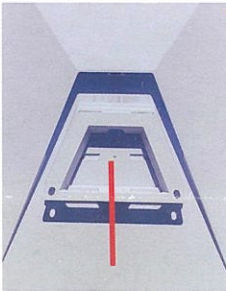
Installation Instructions.



Step 1. Remove the kickstand that is supplied in the Starlink Dish kit from the Dish. Lift the tab bar up so the two tabs clear the Dish, slide the kickstand backwards.



Step 1.

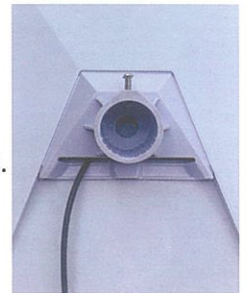


Step 2a.



Step 2a. If cabling through the pole, insert the cable through the pole and feed the cable through the center hole in the FB607313 Starlink Pole Adaptor.

Step 2b. If cabling on the outside of the pole feed the cable ABOVE the tab bar. DO NOT feed the cable between the tab bar and the Dish.



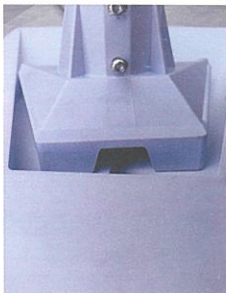
Step 2b.

Step 3. Plug the Starlink Cable into the Dish and ensure a good positive connection is made. The plug should click into the socket on the Dish and the Sealing Boot should be firmly seated into place.

Before locking the Adaptor into the dish, ensure the cable is seated between the guide posts which help keep the plug and seal in place.

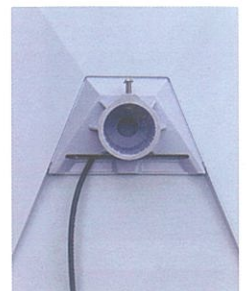


Step 3.



Step 4.

Step 4. Slide the FB607313 Starlink Pole Adaptor onto the Dish and push it in until the tags click into place.

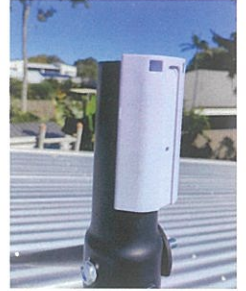


Step 5.




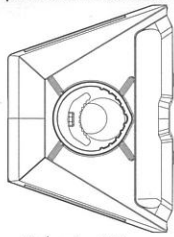
Step 5. Place the FB607313 Starlink Pole Adaptor onto the pole of the mount you are using, if the cable is drawn through the pole, ensure any slack in the cable is gently pulled through as you insert it into the FB607313 Starlink Pole Adaptor.

Note: If using a pole with a diameter less than 42mm, please use the Small Diameter Pole Adaptor that comes with the FB607313 Starlink Pole Adaptor. Place the Small Diameter Pole Adaptor on the top of the pole, there are two locating studs that will hook onto the pole and hold it in place.

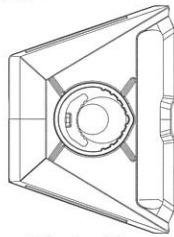


Carefully lower the Dish with the FB607313 Starlink Pole Adaptor onto the pole, ensure the locking screws are located center to the Small Diameter Pole Adaptor.

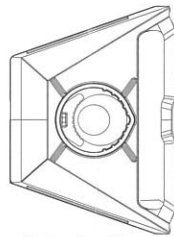
 Small Diameter Pole Adaptor
for use with pole diameter 32mm to 42mm



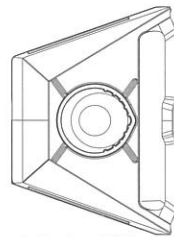
Pole size 32mm



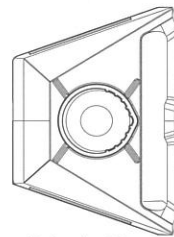
Pole size 38mm



Pole size 42mm

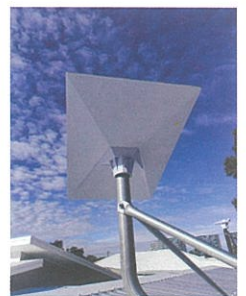


Pole size 44.5mm



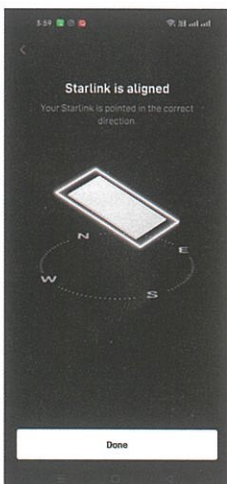
Pole size 50mm

Step 6. Tighten both screws evenly so they are holding the FB607313 Starlink Pole Adaptor and Dish firmly but you should be able to rotate the Dish for the correct alignment. Ensure the FB607313 Starlink Pole Adaptor is lowered completely into position before tightening the screws.



Step 6.

Step 7.



Step 7. The FB607313 Starlink Pole Adaptor is set to the correct 20° tilt angle. Rotate and align the dish using the Starlink app as a guide for the correct orientation. Once the alignment procedure has been completed tighten the screws firmly, **do not over tighten the screws, the full length of the screws do not need to be utilised.** Tighten the screws until the Dish cannot rotate on the pole, small indentations on the pole are all that is required to have a stable and secure installation.

